

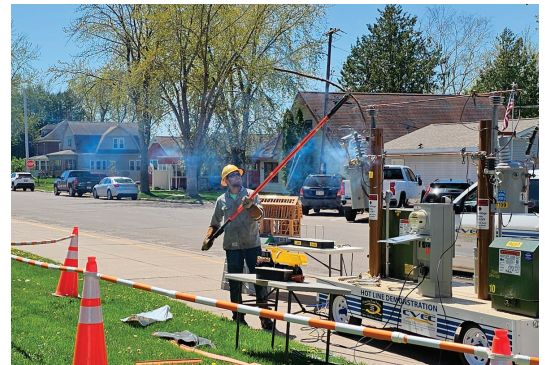
ELECTRICAL SAFETY IS IMPORTANT AT ANY AGE

Your Cooperative Powering Your Future
CVEC
 Chippewa Valley Electric Cooperative
 317 S. 8th Street, P.O. Box 575

Crew members emphasized the importance of electrical safety with Cornell Elementary students. 4K Students visited the co-op to learn about electrical safety, see Kyle climb a pole and go WAY up high in the bucket truck.

Grades kindergarten through fifth experienced the high voltage safety demonstration and had the chance to try on the crew's gear. Our crew was impressed with the thoughtful questions from the students and enjoyed sharing a little bit more about their work and how to stay safe around electricity.

We think there might have been some future lineworkers in our midst.



WELCOME, DR. EUGENE BUCHNER



Due to the unexpected loss of former director Steve Johnson, per the cooperative's bylaws, the current Board of Directors has instated longtime CVEC member, Dr. Eugene Buchner to serve out the remainder of the District Two Board Director term.

Dr. Buchner grew up on a dairy farm west of Bloomer. He went on to graduate from Bloomer High School and attend both UW-River Falls and the University of Minnesota to complete his degree in veterinary medicine.

After his schooling was complete, he returned to the Bloomer area and worked

at a veterinary practice there before starting his own business specializing in embryo transfer.

Dr. Buchner is also a husband, father to three, and grandfather to eleven. He is involved in area snowmobile organizations and has always played an active role in his church, including serving on the church council.

About five years ago, Dr. Buchner sold his business, and while he still works part-time for the current owner, he is looking forward to having the time to dedicate to representing his district on the Board of Directors.

THE IMPORTANCE OF A STRONG GENERATION MIX

Here at Chippewa Valley Electric Cooperative (CVEC), we often talk about how we are focused on providing affordable, reliable, safe, and environmentally responsible electricity. Our wholesale power provider, Dairyland Power Cooperative (DPC), is guided by the same mission. While we agree on the mission, many factors can impact our efforts making a strong generation mix a vital part of the future of power for our area and beyond.

A "generation mix" refers to the breakdown of electricity sources used to power a particular region or population. It's essentially the combination of different fuel types (like coal, natural gas, nuclear) and renewable sources (like solar, wind, hydro) that contribute to electricity generation.

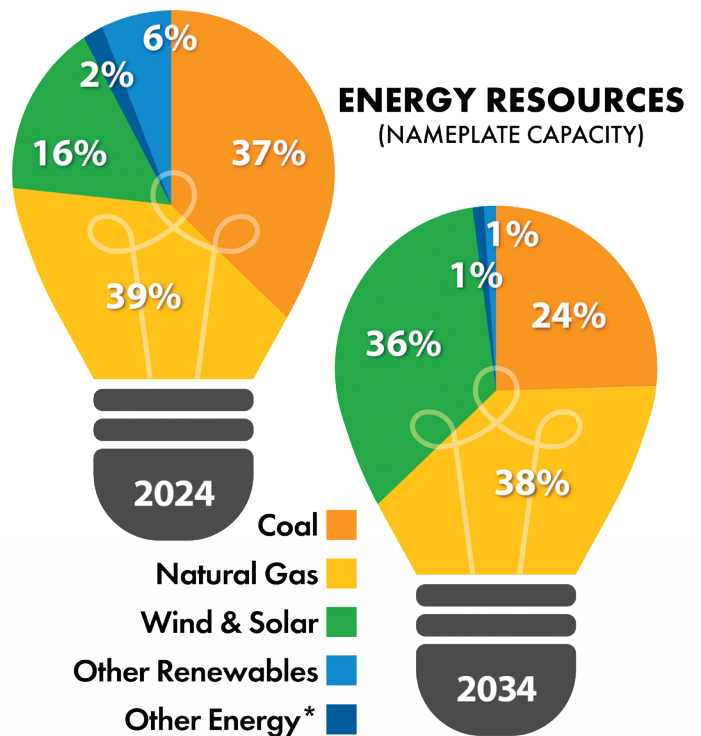
The generation mix describes the different ways a region or country produces electricity. All generation resources have "pros and cons" – which is why diversification is important for sustainability and reliability.

An all-of-the-above approach lets our wholesale power supplier, DPC, maximize the pros and minimize the cons of each type of energy source to best serve CVEC and the other cooperatives and municipalities that rely on DPC for generation and transmission of power. (View graph to the right to see DPC's current and future anticipated generation mix.)

Solar and wind are intermittent – their output depends upon the forces of nature, at any given moment. In a world where we are constantly reliant on power, the unpredictability of wind and solar is a large con, a big pro is that their fuel is free.

As fuel costs are often variable and can be one of the biggest expenses any utility faces, free fuel provides a major benefit to the system and can take the pressure of demand off other more dependable power sources.

DPC GENERATION MIX



*Renewable technology without Renewable Energy Certificates (RECs)



The dependability of wind and solar is lower than fossil fuels and nuclear energy plants, but their ability to displace higher cost energy generation is valuable. However, the initial installation and/or investment can be costly. Once established, not only does this reduce costs to consumers, it also reduces fossil fuel price volatility risks.

The best and most economical way to support renewable energy is to become a part of the Evergreen Program. Evergreen is voluntary and designed to fit any lifestyle. With blocks starting at just \$0.65 per 100 kWh per month, it allows members an opportunity to be “green” and support renewable energy to the extent their budget allows. It is easy. Private ownership of renewable energy generation equipment can be limited by cost and location. Evergreen doesn’t require any upfront costs for equipment or future maintenance. It provides an option for your home, farm or business to be “green” without solar panels or wind turbines physically on the property. If you are considering adding solar on your property, please reach out to CVEC in the beginning stages of your project to ensure your system meets the requirements of the co-op and is compatible with our system.

A diverse resource portfolio benefits system reliability, affordability and the environment. DPC will continue its work on maintaining a well-balanced, cost-competitive resource portfolio, while exploring new technologies such as energy storage and advanced nuclear. CVEC is proud to partner with DPC to provide dependable power in an environmentally conscientious way.



If you'd like to support renewable energy, you can sign-up to pay for a block or multiple blocks of renewable energy on your monthly electric bill. This program, provided in partnership with Dairyland Power Cooperative, includes wind, solar, landfill gas, and animal waste-to-energy.

Contact us today to learn more:

cvec@cve.coop

715-239-6800



Flambeau Hydro Station





Your Cooperative Powering Your Future

CO-OP NEWS

CELEBRATING OUR CO-OP COMMUNITY!

Watch for the White Envelope

Starting with your August billing statement, your bill will come in a white envelope. You will have a separate enclosed white return envelope in which to mail your payment back. If you are on our automatic payment plan, you won't receive the return envelope. Members with multiple accounts will begin seeing invoice billing.

Don't want to deal with mailing envelopes? We offer several convenient ways to automatically pay your bill. Contact our office at 715-239-6800 or visit our website (www.cvecoop.com) and click on the SmartHub link in the upper right corner.

All members who sign up for ACH automatic payment now through the end of September will receive a \$20 bill credit.



Call Before You Dig: Contact Diggers Hotline

Planning a summer project that involves digging? Whether you're planting a tree, installing a fence, or starting construction, be sure to contact Diggers Hotline first by calling 811 or visiting www.diggershotline.com.

It's free, easy, and it's the law. Utility lines could be buried just inches below the surface, and hitting one can be dangerous and costly.

Always call at least three business days before you dig to keep yourself and your community safe.



Join us at National Night Out

The event will be held on Wednesday, July 30, 2025, from 6 to 8 p.m. at Mill Yard Park in Cornell. National Night Out is a free, family-friendly event focused on promoting community partnerships and public safety.

This year's highlights include a visit from the LifeLink helicopter at 7 p.m., free food and root beer floats, games, prizes, and activity booths.

Smokey the Bear will also make a special appearance and you can meet your local law enforcement, fire and EMS personnel. Attendees can explore first responder equipment, play games with area business supporters, meet other community organizations, and just have fun!



POLICE • COMMUNITY PARTNERSHIPS

Manage Your Account with SmartHub

SmartHub makes it easy to manage your electric account anytime, anywhere. With the free app or online portal, you can view and pay your bill, monitor energy use, report outages, and sign up for notifications—all from your smartphone or computer.

Visit www.cvecoop.com or download the SmartHub app today to get started.



317 S. 8th St., P.O. Box 575
Cornell, WI 54732
715.239.6800 • 1.800.300.6800
www.cvecoop.com • email: cvec@cve.coop

This institution is an equal opportunity provider.

Board of Directors

District 1 – Sue Frei
District 2 – Dr. Eugene Buchner
District 3 – Frank Draxler
District 4 – Kevin Meistad
District 5 – Joe Melville
District 6 – Steve Wall
District 7 – John Petska

Russ Falkenberg, President/CEO



Follow us on Facebook 
Monday—Thursday: 7:30 a.m.-4:00 p.m.
Friday: 7:30 a.m. - 12:00 p.m.

Rebecca Pehlke, Editor