



Chippewa Valley Electric Cooperative
317 S. 8th Street, P.O. Box 575

ROADSIDE CLEAN-UP

Our Chippewa Valley Electric Cooperative and CV Connected teams spent some time cleaning up a stretch of highway between Cadott and Cornell.

Our teams not only work in the area, but we live here, raise our families here, and care about our communities. We do our best to give back in ways that we can.



5 WAYS to Reduce Use During Extreme Heat

During periods of extreme heat, the demand for electricity can skyrocket, placing additional strain on the grid. By working together to lower our electricity use, we can reduce pressure on the grid.

Here are five effective ways to lower use at home.

1. **Raise your thermostat** setting a few degrees higher than usual. Every degree can reduce cooling energy consumption.
2. **Cook with smaller appliances** to save energy and reduce heat gain in the kitchen.
3. **Keep blinds, curtains and shades closed** during the hottest part of the day to block direct sunlight.
4. **Use fans** to circulate air, which can make you feel cooler without needing to lower the thermostat.
5. Shift activities that require a lot of energy consumption to **off-peak hours** when demand is lower.



COUNTRY LIFE, COWS AND QUALITY ICE CREAM ALL ON A FAMILY FARM—WHAT COULD BE BETTER?

This is just the experience that you will get when visiting Klemish Creamery just outside of New Auburn.

Randy and Dixie Klemish own the Chippewa County farm which has been in the family since 1889. Their son and daughter-in-law, Joe and Trista Klemish's 54-cow herd call the farm home. Joe represents the fifth generation of the family to make a living milking cows on the farm. The ice cream served up at the creamery is made fresh from the family's own milking operation.

Creating a value-added product to keep more profit from their milk on the farm was something the Klemish family had considered for a number of years. "We thought a lot about ways to keep our small farm going," shared Dixie.



The local food movement in partnership with receiving a Dairy Business Innovation Alliance Grant, sparked the Klemish family to move forward. "The grant paid for a large majority of the equipment, taking some of the risk out of the new endeavor," shared Dixie. "Getting the grant also gave us the confidence to move forward knowing someone else believed in our idea."

Ground was broken for the creamery building the fall of 2021. The Klemish family completed most of the interior work on the building themselves, and they received their certifications and licensures in August 2022, officially opening to the public in November of that year.

"Ice cream is a perishable product. If the power goes out, we would lose product," shared Dixie. "Luckily, since we have opened our doors we haven't had an issue with any power outages from Chippewa Valley. If power was unreliable it would be quite the hassle."

"It has really been fun seeing all of the people who just enjoy coming to the farm, sitting on the picnic tables and watching the cows," shared Dixie.

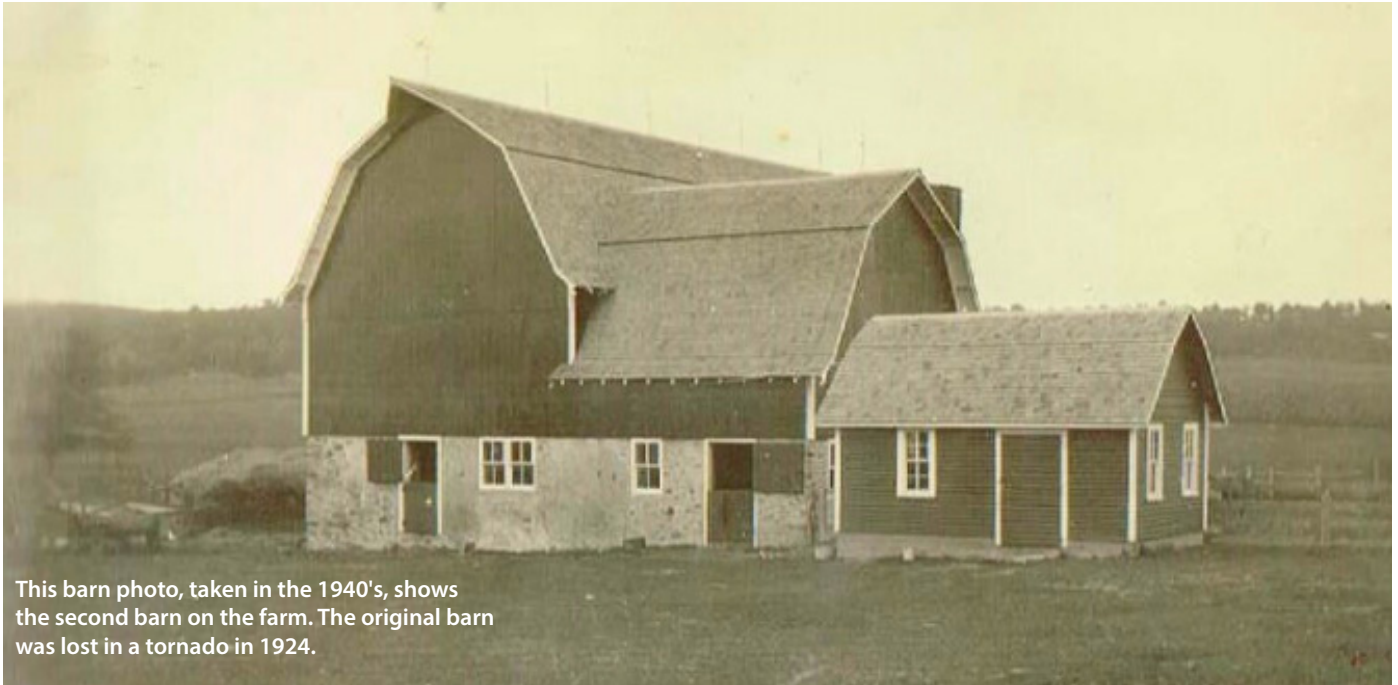
"We didn't plan on it being a chance to expose more children and people to the lifestyle of a small family farm, but that has been an added bonus."

If you have plans to visit the



Klemish Family, Summer 2022

Pictured front row (seated and kneeling): Verna Klemish and Jaimie Klemish. Middle row: Gauge Klemish, Dixie Klemish, Vanessa Klemish. Back row: Trista Klemish, Joe Klemish, Randy Klemish, and Jared Siverling (Vanessa's husband).



This barn photo, taken in the 1940's, shows the second barn on the farm. The original barn was lost in a tornado in 1924.

creamery, a few customer favorites have been Raspberry Cheesecake and Banana Cream Pie, along with their four flavors of ice cream sandwiches.

What's next? Dixie is currently going through the extensive process of becoming a cheesemaker. She has completed two of the five required courses including a weeklong cheesemaking course at UW-River Falls. She plans to complete the rest of the courses, as well as 240 apprenticeship hours this summer.

Klemish Creamery is just one of the many family-owned businesses that help to make the Chippewa Valley unique. Chippewa Valley Electric Cooperative is proud to provide reliable and safe electricity across our region, doing our part to support our communities.



Gauge Klemish, grandson

Celebrating our Farmers

June Dairy Month is a time to celebrate and honor hard-working dairy farmers and their families. It truly takes a special kind of dedication to be a farmer.

Chippewa Valley Electric Cooperative is proud to help power over 175 members with dairy farms and an additional 200 members with non-dairy farms.

Thank you to farm families, like the Klemish family, for all you do to make rural Wisconsin a special place to call home.



Visit
Klemish
Creamery
22474 52nd St.,
New Auburn, WI
Self Serve
Everyday 8 a.m.- 8 p.m.



Your Cooperative

Powering Your Future



CO-OP NEWS

CELEBRATING OUR CO-OP COMMUNITY!

Sparks

SUMMER

MEMBER APPRECIATION PICNIC

THURSDAY, JUNE 12
10:00 am - 2:00 pm

CVEC Headquarters at 317 S 8th St- Cornell

Join the CVEC team & your neighbors
for a FREE picnic lunch!

Sorry, No- Carry-outs!

Activities for the kids throughout the day!

Kevin's Juggling & Balloons will be providing entertainment & balloon creations.

YOUTH LEADERSHIP CONFERENCE

The annual Youth Leadership Conference (YLC) will be held at UW-Stout on July 15–17, 2025. The YLC is a dynamic three-day event for high school students across Wisconsin to develop their leadership skills while learning about the purpose, operation, and scope of cooperative business. High school sophomores and juniors with family members who belong to CVEC are eligible to request an application.

To request an application, please contact CVEC at cvec@cve.coop or call 715.239.6800.

Applications are due to CVEC by June 20, 2025.




317 S. 8th St., P.O. Box 575
Cornell, WI 54732
715.239.6800 • 1.800.300.6800
www.cvecoop.com • email: cvec@cve.coop
This institution is an equal opportunity provider.

Board of Directors

District 1 – Sue Frei
District 2 – Vacant
District 3 – Frank Draxler
District 4 – Kevin Meistad
District 5 – Joe Melville
District 6 – Steve Wall
District 7 – John Petska

Russ Falkenberg, President/CEO



Follow us on Facebook 
Office Hours: Monday–Friday, 7:30–4 p.m.

Rebecca Pehlke, Editor