



Med-A-lert

BELLE+ MOBILE DEVICE

Chippewa Valley Electric Co-op is proud to offer our members a dependable 24/7 Personal Emergency Reporting System, which helps you and your loved ones achieve access to help immediately!

Live your life to the fullest with Belle+, which offers complete mobility for the active individual. Using Verizon wireless service, your device can be located and help sent with a push of the button, even if you're not at home. Device includes fall detection.

Only \$38 per month

Shipped Directly to Your Home with No Set-up Fee

**3 month minimum service term*

- ✓ Access Help Immediately
- ✓ Fall Detection
- ✓ GPS-based location service that works outside the home

**Requires adequate Verizon coverage*

CALL TODAY!



715-239-6800 or 800-300-6800



www.cvecoop.com




Chippewa Valley Electric Cooperative

Weight: 2.6 oz
Size: 1.71 x 2.8 x 0.83 inches
Water Resistant
Belt Clip or Lanyard
Battery Lasts up to 5 days
Location Services

CVEC is an equal opportunity provider.





PROVIDING RELIABLE ELECTRICITY

BEYOND THE FLIP OF A SWITCH

In today's high-tech, electronic world, it is more important than ever to provide safe, reliable electricity to our members. The infrastructure that delivers power to homes and businesses demands constant maintenance and occasional upgrades to meet evolving technological standards and safety regulations.

Chippewa Valley Electric Cooperative (CVEC) has numerous maintenance programs that help provide safe, reliable electricity. One of the most important programs the cooperative performs is our vegetation management program. This brushing and spraying program is twofold. First trees

are cut and trimmed from within the right-of-way. Once the trimming and clearing process has been completed, a herbicide application is applied to help reduce regrowth within the right-of-way.

Trees continue to be among the leading causes of blinking lights and power outages. The cooperative has an extensive tree clearing program that is performed on a six-year rotation. The tree clearing program along with other maintenance programs have aided in decreasing CVEC's average outage times over the last 5 years to under an hour per member. **One of the lowest in the state.**



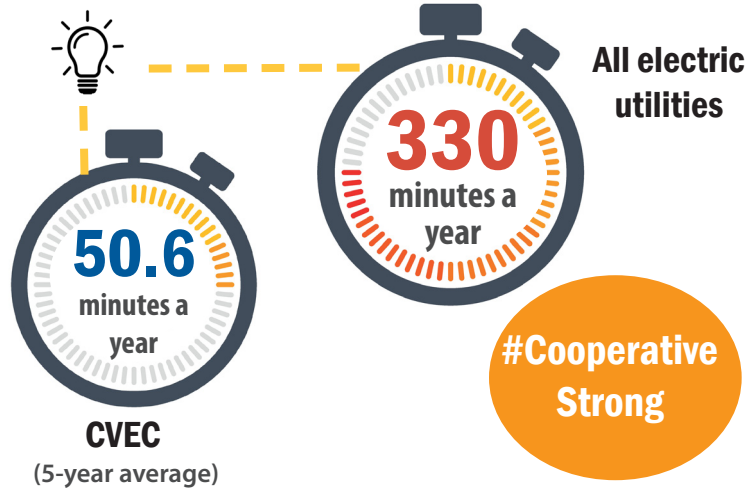


CVEC works alongside professional contractors who are all state certified and licensed through the Department of Agriculture. The use of herbicides to control the growth of small trees and brush is far more economical compared to the use of heavy machinery such as bucket trucks, choppers, and mowers.

It is important to remember that a single tree can cause blinking lights and power outages that can impact hundreds of customers for miles around. A tree clearing program in combination with herbicide treatments is the most economical way to maintain a clear right-of-way corridor.

The vegetation management program is just one of the many ways our crews work to keep the lights on when you, the member, flip the switch.

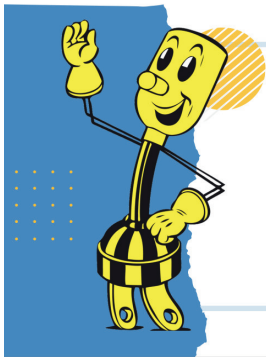
AVERAGE OUTAGE TIME



TRIMMED TREES = BETTER SERVICE

When you see us trimming trees near power lines, know that we are doing so because:

- Tree and foliage overgrowth can interfere with power distribution.
- Power lines can give off a spark or arc that may land on a nearby branch and ignite.
- The lights in your house may flicker when tree branches brush power lines during high winds.
- Stormy weather can cause nearby limbs to break off and land on power lines.
- Unobstructed power lines make it easier and safer for line workers to maintain equipment and restore power.



Your Cooperative **CVEC** Powering Your Future

Sparks CO-OP NEWS

CELEBRATING OUR CO-OP COMMUNITY!

CVEC Annual Meeting: Thursday, March 27

CVEC's 88th Annual Meeting of Members will be on Thursday evening, March 27, at the cooperative's headquarters in Cornell. It's a good opportunity to learn about your cooperative while enjoying a dinner served by CVEC staff. Plus, there will be prizes! We invite you to come out and see your friends and neighbors, our cooperative community. Stay tuned for more details.



Director Candidate Paperwork Due Monday, February 10

Is now the time for you to represent? District 2, District 4, and District 7 elections will be held at CVEC's Annual Meeting in March. Members whose primary residence is within District 2, District 4, or District 7, are eligible to run for candidacy. Please contact the cooperative if you are interested, and we'll get you the information you need to get your name on the ballot. The deadline to return all required documents is Monday, February 10.

Avoid Postal Delays by Using SmartHub

CVEC occasionally receives calls from our members notifying us of a mail delay with their payment. With SmartHub, you can avoid postal delays as you will now receive a monthly email that states your bill amount and provides a link to where you can view your bill online. This email is typically sent out the first week of the month, when the bills are processed.

SmartHub is a useful tool. You can enroll in automatic payments with a checking account or credit card, monitor your monthly usage, and keep up to date on co-op happenings.

You can sign up either with the SmartHub app or at cvecoop.com.



Scholarships Available for High School Seniors

The value of each scholarship is \$500 and applications can be obtained from CVEC's website (cvecoop.com) or by contacting the cooperative office.

The deadline to return completed scholarship applications to the cooperative office is April 1, 2025.



317 S. 8th St., P.O. Box 575
Cornell, WI 54732
715.239.6800 • 1.800.300.6800
www.cvecoop.com • email: cvec@cve.coop
This institution is an equal opportunity provider.

Board of Directors

District 1 – Sue Frei
District 2 – Steve Johnson
District 3 – Frank Draxler
District 4 – Kevin Meistad
District 5 – Joe Melville
District 6 – Steve Wall
District 7 – John Petska

Russ Falkenberg, President/CEO



Follow us on Facebook

Office Hours: Monday, 7:30–4 p.m.
Friday, 7:30 a.m.–12 p.m.

Rebecca Pehlke, Editor