



## CVEC DONATES TRANSFORMERS TO HELP BRING POWER TO NAVAJO FAMILIES

Two semi-trucks loaded with transformers left from Chippewa Valley Electric Cooperative (CVEC) last month en route to the Navajo Nation, which still has about 10,000 rural homes without power.

The Wisconsin Electric Cooperative Association (WECA), in partnership with other cooperatives across the nation, has been working to help supply the Light Up Navajo! program with additional equipment and resources.

CVEC donated over 170 transformers from inventory stock to the Navajo Tribal Utility Authority (NTUA). The donated transformers are undersized for the majority of the new services in the CVEC territory but will be a good fit for the needs of NTUA.

This is just another way CVEC is living out cooperative principle #6 - cooperation among cooperatives.



# MAKE A DIFFERENCE AS A CO-OP DIRECTOR

## DID YOU KNOW CHIPPEWA VALLEY ELECTRIC COOPERATIVE (CVEC) IS LED BY OUR MEMBERS?

**C**VEC is guided by a seven-person Board of Directors. All are members of the cooperative and elected by YOU (our members). Each member district has the opportunity to vote for a representative on CVEC's Board of Directors every three years.



The Directors are **YOUR** voice and meet monthly to guide the direction of the cooperative. That's the cooperative difference!

## DIRECTOR QUALIFICATIONS

The main qualifications to serve as a representative on the CVEC Board of Directors are:

1. A CVEC member and primary resident of the district from which elected.
2. Not employed by or holding a financial interest in a competing enterprise or business selling electric energy or supplies to the cooperative.
3. Not employed by the cooperative.
4. Compliant with the cooperative's nepotism policy.

## DISTRICTS UP FOR ELECTION IN 2025

### District 2

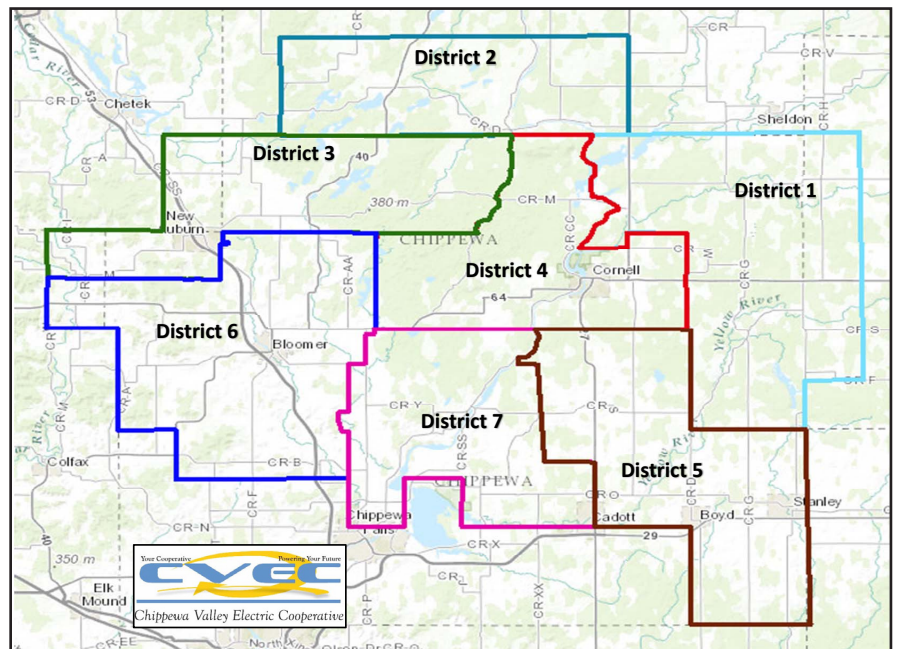
Townships of Rusk, Big Bend, Washington, and Willard of Rusk County; and those members of Chippewa Valley Electric Cooperative whose service extensions lie within said townships.

### District 4

Townships of Cleveland and Estella, and the portion of the Township of Birch Creek located east of County Highway E, Chippewa County; and those members of Chippewa Valley Electric Cooperative whose service extensions lie within said townships or portions of townships.

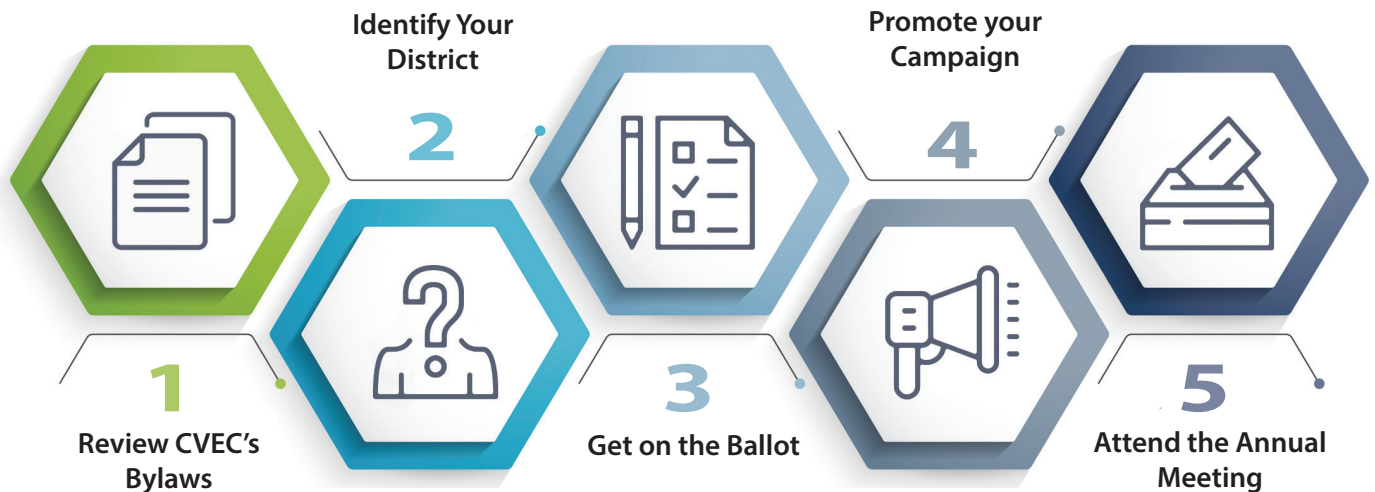
### District 7

Townships of Eagle Point and Anson, and the portion of the Township of Goetz located west of State Highway 27, Chippewa County; and those members of Chippewa Valley Electric Cooperative whose service extensions lie within said townships or portions of townships.



To request a director candidate packet or find out more details about board elections, contact Rebecca at [rpehlke@cve.coop](mailto:rpehlke@cve.coop) or call 715.239.6800.

# HOW TO JOIN CHIPPEWA VALLEY ELECTRIC COOPERATIVE'S BOARD OF DIRECTORS



1. **Review CVEC's Bylaws:** Bylaws are located [cvcoop.com](http://cvcoop.com)
2. **Identify Your District:** Directors serve 3-year terms, alternating election years. Don't know your district? Call CVEC or refer to the upper right corner of the bill.
3. **Get on the Ballot:** Connect with the co-op to indicate interest in running and receive a candidate packet to get on the ballot.
4. **Promote your Campaign**
5. **Attend the Annual Meeting:** Directors are elected by members residing in their district at the Annual Meeting.

## BOARD OF DIRECTOR DUTIES & RESPONSIBILITIES

**What does a director do?** A director represents all member-consumers of CVEC and is responsible for annual budgets, rate schedules, approval of general policies, capital credit retirements, present bylaw amendment changes, delegating authority to the President/CEO to execute, carry out the daily activities of the cooperative and follow established policies. Directors' decisions are made in the best interest of the cooperative.

**What is the time commitment?** Each director serves a three-year term. Directors can expect to be available 20-40 days each year for attendance at monthly board meetings, CVEC's annual meeting, training sessions, member events, educational seminars, and travel.

**When does the board meet?** The board of directors typically meets the last Thursday of each month with meetings beginning at 8am and varying in length from approximately 4 to 6 hours. Directors also attend occasional other meetings and events.

**Is there any compensation?** Directors are paid a per diem for each meeting attended as well as IRS-approved mileage.





Your Cooperative **CVEC** Powering Your Future *Sparks*  
**CO-OP NEWS**  
**CELEBRATING OUR CO-OP COMMUNITY!**

### Rebate Deadline Approaching

Chippewa Valley Electric Cooperative wants to remind its members that there are a variety of rebates available for qualified purchases of energy efficient products. Rebates are in place through December 31, 2024, or until funds, by rebate or in total, are depleted. Please submit rebate forms as soon as possible to ensure that you can take advantage of our rebate program.



**Please note:** Rebate forms and any additional requirements must be submitted no later than 3 months after the purchase date. Rebate forms can be found online.

### Lobby Hours

Earlier this year, our lobby hours changed to:

**Monday-Thursday:** 7:30 a.m.-4:00 p.m.

**Friday:** 7:30 a.m.- 12:00 p.m.

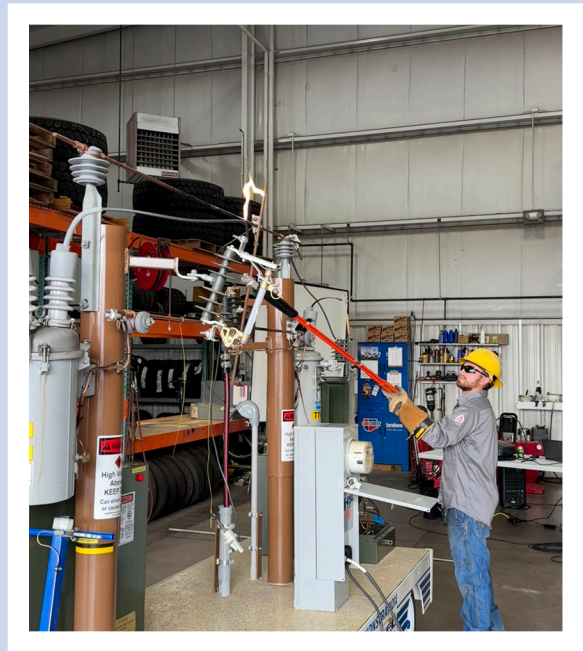
**Saturday & Sunday:** Closed

Outages can still be reported 24/7 by calling 715-239-6800 or toll free 1-800-300-6800.

### Electrical Safety in the Chippewa Valley remains a Top Priority

At the end of October, CVEC crew members performed High Voltage Safety Training Demonstrations to the crews at Chippewa County Highway Department.

CVEC is proud to partner with other community organizations to promote electrical safety across the Chippewa Valley.



317 S. 8th St., P.O. Box 575  
 Cornell, WI 54732  
 715.239.6800 • 1.800.300.6800  
 www.cvecoop.com • email: cvec@cve.coop  
*This institution is an equal opportunity provider.*

### Board of Directors

- District 1 – Sue Frei
- District 2 – Steve Johnson
- District 3 – Frank Draxler
- District 4 – Kevin Meistad
- District 5 – Joe Melville
- District 6 – Steve Wall
- District 7 – John Petska

**Russ Falkenberg, President/CEO**



Follow us on Facebook

Office Hours: Monday, 7:30–4 p.m.  
 Friday, 7:30 a.m.–12 p.m.

**Rebecca Pehlke, Editor**