



# \$753,000 RETURNED TO MEMBERS DURING CO-OP MONTH!

October is co-op month! It's a great time to celebrate one of the key elements of the cooperative business model, and that is the return of capital credits to eligible members. This year, Chippewa Valley Electric Cooperative (CVEC) will return \$753,000 to approximately 7800 current and past cooperative members.

***You are an owner of your electric cooperative and capital credits reflect your ownership in the cooperative.***

This year's capital credits will be paid out to members who purchased electricity from CVEC in the following years: 1999, 2000, and 2020.

**100% of 1999**  
**85% of 2000**  
**15% of 2020**

Members with a refund amount of \$50 or less will see a credit on their electric bill. When the amount of your capital credits refund is more than \$50, a check will be sent in a separate mailing. Please note: The checks are printed and mailed from La Crosse, WI and cannot be picked up from our office in Cornell.

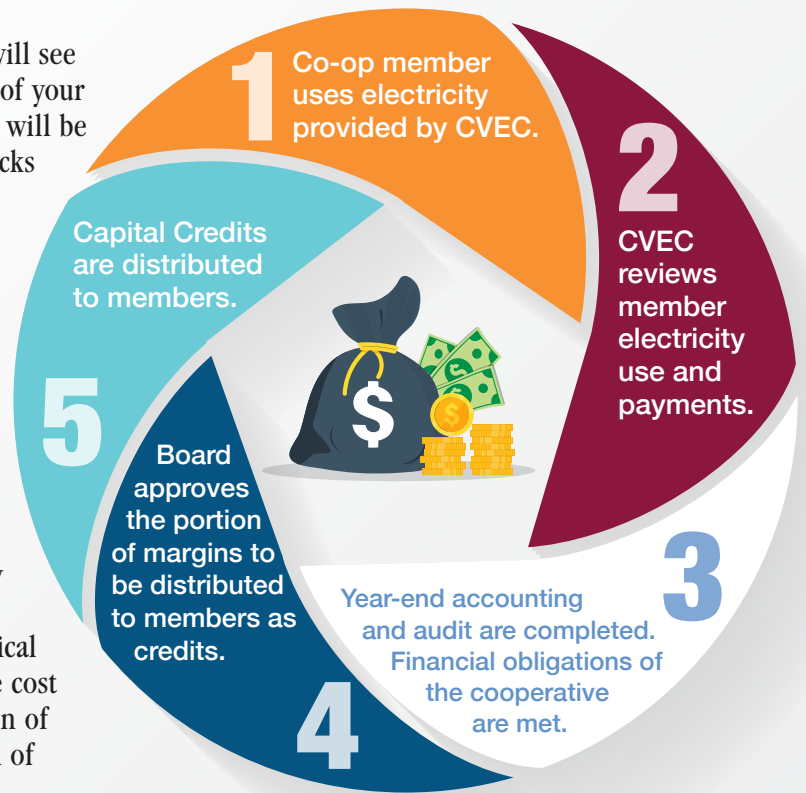
**Since 1937, nearly \$17 million has been returned to our members!**

How does the process work? Capital credits are a unique benefit of your cooperative membership. Since 1937, nearly \$17 million has been returned to our members! As you pay your monthly electric bills, Chippewa Valley Electric Cooperative uses the income to grow, operate, and maintain a safe and reliable electrical system. Any money received over and above the cost of doing business is called margins. Your portion of the margins is then returned to you in the form of credits.

In co-op utilities, the profits are returned to you, the consumer-members. In other types of utilities, the profits go to a select group called stockholders.

**It pays to be a member!**

- Your share of the cooperative's margins in a given year is called your allocation. That allocation is based on the amount of energy you paid for during the year.
- Credits accumulate in an account in your name. When the board of directors approves a retirement of capital credits, they are approving the return of a specific percentage to be distributed to you. Capital credits are then issued to qualifying members.



# Electric Heat – It's a GREAT Value

As the price of LP continues to climb, you may want to consider using electricity for your main heat source by enrolling in our Dual Fuel Program. This can easily be accomplished by adding a plenum heater to your existing furnace. An electric plenum heater is the easiest and least costly option to take advantage of the cooperative's Dual Fuel program and use electric heat billed at a discounted price. Give us a call! CVEC is a dealer for Electro WarmFlo plenum heaters.

The Dual Fuel program is a program designed by electric cooperatives to allow Members to take advantage of lower cost electricity for home heating.

By enrolling in the Dual Fuel Program, you agree to permit Chippewa Valley Electric Cooperative (CVEC) to control your HVAC system(s) during periods of peak demand. It's at these times you will rely on your backup heating system(s).



In return for allowing CVEC to interrupt your HVAC, you will receive a reduced rate for the electricity used for HVAC.

With our current Dual Fuel rates for electric heat, the equivalent LP price is approximately 1.45/gallon, which is significantly less than the cost of LP.

To qualify for the Dual Fuel Program, your primary heat source must be electric, with a demand of at least 8KW. You must also have a backup heating source, such as an LP or Fuel Oil furnace, or a heat storage source such as a storage furnace or in-floor heat installed in a concrete slab. All electric heat on the account must be controlled when on the Dual Fuel Program.

Call Russ at CVEC for more information at (715) 239-6800.

## Underground Service Deadline October 15 – New Service

When the ground freezes in Wisconsin, all underground cable construction comes to a halt until the spring thaw. If you have construction plans that are not already scheduled, call Chippewa Valley Electric Cooperative TODAY!

We will do everything possible to meet your construction needs and install your electrical service before winter. However, all preliminary requirements must be met by October 15 for New Service construction. All requirements must be completed to guarantee service installation before the ground freezes. Once the ground freezes, it will be too late to install the underground service you were hoping to have this fall.



## Focused on YOU.

Electric cooperatives were created to serve their members. Because we're a co-op, we're able to adapt to our community's unique needs. That's the power of co-op membership.

**OCTOBER IS NATIONAL  
CO-OP MONTH**