

CHIPPEWA VALLEY ELECTRIC COOPERATIVE

NEWSLETTER

MAY 2002

FROM THE PRESIDENT & CEO HAS SPRING FINALLY ARRIVED!



Maybe spring is finally here, for having been such a mild winter; it sure seemed to take forever for the warm weather to get here.

I would just like to mention some important items now that the summer construction and storm seasons are upon us.

First if you are doing any underground work, please be sure to call Digger's Hotline and have any underground cables located. If the cables are not located and you would happen to dig into them, some of our cables are carrying 7,200 volts, serious injury or death could occur. Also if cables are not located and you dig into them, you will be charged for the repairs to the cable. Digger's Hotline requires

a three working day notice, before digging can begin. Think ahead and safety; call Digger's Hotline (1-800-242-8511) before doing any underground work.

Second, if you are thinking of building a new home this summer on Chippewa Valley Electric Lines. There is usually a two to three week period from when a person applies for electric service and we are able to install the lines. So, plan ahead, if you are considering a new electric service, contact our office as soon as possible to avoid delays in receiving electric service. Also, when planning your home, keep in mind that Chippewa Valley Electric has a number of energy efficient heating and water heating options available and don't forget our

DirecTV satellite systems that every new house needs.

Last, with the summer come storms and an increase in the number of outage calls. If you have no power - CHECK YOUR OWN fuses or breakers first, then check with your neighbors to see if anyone else is out. We ask that you be sure to check all of your own fuses or breakers first before calling our crew, because if our crew is called out and the cause was members own wires or fuses, we will bill that member for the outage call. If you have determined the outage is Chippewa Valley Electric Cooperatives problem call 715-239-6800 or 1-800-300-6800.

Todd Steward

SURGE PROTECTION DEVICES

With the coming of summer, we are all looking forward to getting outside and enjoying the warm weather again. One concern that comes to mind is the summer thunderstorms. Lightning strikes can ruin your electrical appliances, including VCR's, microwaves and Computers.

Chippewa Valley has a wide variety of Surge Protection devices that help protect your electronic devices from the surges caused by lightning strikes. Our devices range from the whole house protection to the individual surge protectors for

protecting a single electronic device, such as a computer or satellite system. Some of the units we sell will also provide protection from the "back-door" surges that travel across phone lines and cable or satellite hardware.

The surge protection devices we sell are backed with a manufacturer's limited warranty that will repair or replace any equipment these devices fail to protect. Now is the time to check your surge protection, before it's too late.

Please contact our member services department for information on our surge protection equipment.

**Chippewa Valley Electric
is a member of...**

DIGGERS HOTLINE

Toll-free: 1-800-242-8511

Milwaukee area:

(414) 259-1181

TDD for Hearing Impaired:

1-800-542-2289

**Chippewa Valley
Electric Cooperative**

P.O. Box 575

Cornell, Wisconsin 54732

(715) 239-6800 or 1-800-300-6800

Your Touchstone Energy® Partner 

PLANT THE RIGHT TREE IN THE RIGHT PLACE

TALLER TREES SHOULD BE PLANTED AWAY FROM OVERHEAD UTILITY LINES

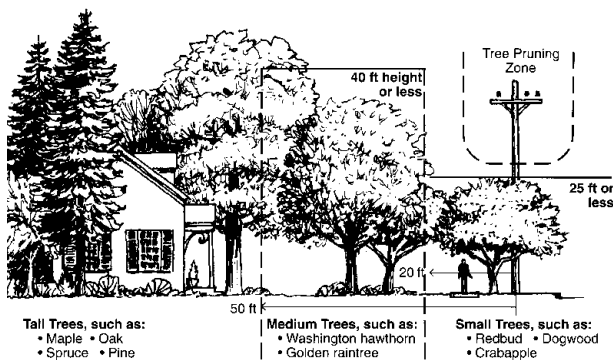
Trees and power lines can co-exist, and potential conflicts can be avoided by selecting and planting trees with size and growth characteristics appropriate to their location.

Low Zone - beneath power lines and for 20 feet to either side of them, plant species that will not exceed 25 feet in height. Taller existing trees in this zone should be pruned to grow around the wires by the utility company.

Medium Zone - trees that grow no more than 40 feet in height are recommended for areas immediately adjacent to the Low Zone in order to

avoid high branches that overhang power lines or trees that could topple into the lines during severe storms.

Tall Zone - higher trees could be used in any locations at a distance of 50 feet or more from power lines. Trees near your house can provide significant energy benefits by providing cooling shade in summer and giving protection from winter winds.



Safety Spotlight

KEEP UNDERGROUND POWER TRANSFORMERS IN THE CLEAR

Power transformers on the ground are green boxes that stand about 18 to 24 inches high. These boxes contain wires and connections that carry 7,200 volts. Planting bushes, trees, or building structures around transformer boxes to obscure them slows down the linemen during outage repairs. Linemen work in all kinds of weather to restore your power during unplanned outages. If the lineman cannot find the transformer, he may not be able to do tests to find damage in the underground lines. Linemen need clear access to the transformer to isolate that transformer. Remember to keep the transformer in the clear to help the lineman do his job quickly and safely.

And **NEVER** allow children to play on or near power transformers. Make sure they understand the danger.

SIGN UP FOR THE AUTOMATIC PAYMENT PLAN

ACH (Automated Clearing House) allows transfer of funds from your checking or savings account, directly to Chippewa Valley Electric's account to cover your electric bill. A direct charge would be made on the 22nd of each month

for the amount of your bill.

If you are interested in participating in this convenient plan, please fill out the form below and return it to our office with the required information.

**BE HASSLE-FREE,
AND SAVE TIME
TOO...**

I want to participate in the Automatic Payment Plan

Name(s) on CVEC bill _____ CVEC Account Number _____

Billing address _____

Work Phone _____ Home Phone _____

Your Financial Institution _____ Account Number _____

City _____ State _____ Zip _____

If your payment is to be deducted from a checking account, enclose a blank check. Write VOID across it and DO NOT SIGN IT.

If your payment is to be deducted from a savings account, enclose a deposit slip that includes your account number.

CVEC has the right to cancel my use of the Automatic Payment Plan. I will write to CVEC if I decide to cancel my use of the Automatic Payment Plan.

Account Holder(s) _____

Signature _____ Date: _____

NOTE: If the account is in two names, both account holders must sign above. Mail this form with your current payment or mail it separately to Chippewa Valley Electric Cooperative, P.O. Box 575, 317 S. 8th St., Cornell, WI 54732. For more information, call 715-239-6800 or 1-800-300-6800.