

CHIPPEWA VALLEY ELECTRIC COOPERATIVE

NEWSLETTER

MAY 2004

HOME SAFETY ACT

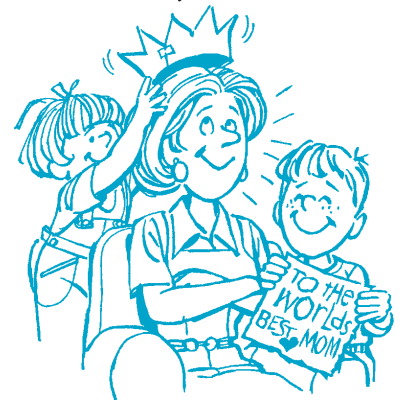
NEW LAW REQUIRES ELECTRICAL INSPECTIONS

According to the Home Safety Act that was signed into law by Governor James Doyle in December 2003, the Uniform Dwelling Code Law now requires the inspection of electrical wiring at all new dwellings before the electric provider can supply electric service. Each electric provider, i.e., Chippewa Valley Electric Cooperative, must receive proof of compliance with the Wisconsin Electrical Code (section 101.865 of the Wisconsin Statutes) before we can connect a new

electric service. If your township or municipality does not have inspection services in place, we can continue to accept a wiring affidavit from your electrician as proof of compliance only until September 1, 2004.

If you are building a new home, please discuss this new inspection requirement with your home builder. At Chippewa Valley Electric Cooperative we want to make sure that you receive a safe, code compliant electrical hook-up in a timely manner.

Remember
Mom on
Mother's Day,
May 9th.



BE CAUTIOUS WHEN BURNING DITCHES

Spring is her, and so it yard clean-up time. Before you burn ditches and fence lines, please take a few minutes to clean around all utility poles in the area.

A pole that has been burned may be weakened to the point of being hazardous to you, the public, or to lineworkers who may have to work on or near the pole. The few minutes spent cleaning around poles and fixtures may save you the inconvenience of being without electric service and any expense associated with replacing damaged poles. If the fire does not burn the pole, the intense heat from the fire pulls the wood preservative out of the pole. This loss of preservative

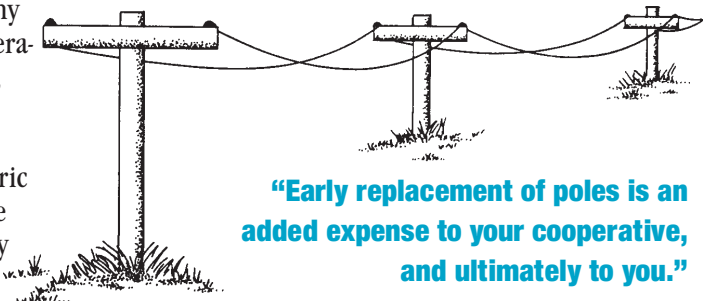
shortens pole life.

Early replacement of poles is an added expense to your cooperative, and ultimately to you. All applicable charges to replace damaged poles, which cost an average of \$1,000 each, are charged to the responsible party. Charges can be at least twice this if the underground primary wire is damaged.

If you notice a fire has damaged a pole or any other cooperative fixture, please call Chippewa Valley Electric Cooperative immediately so we can

check the safety of the pole before an accident.

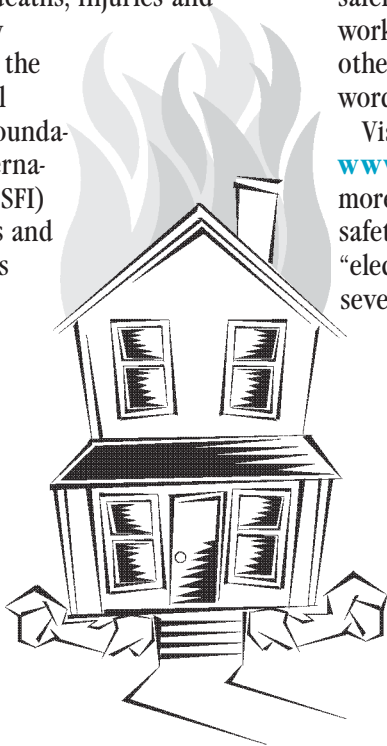
Beware of hazards around poles and underground transformers. Piling things around poles, electric meters, and transformers is a common safety hazard. The accumulation of objects or machinery around or by poles and transformers can make work difficult and hazardous for both you and co-op employees.



"Early replacement of poles is an added expense to your cooperative, and ultimately to you."

MAY IS ELECTRIC SAFETY MONTH

According to the latest statistics from the U.S. Consumer Product Safety Commission (CPSC), approximately three people die each day in residential electrical-related fires and accidental electrocutions in the home; between 1994 and 1998, an annual average of 165,380 electrical-related home structure fires accounted for an annual average of 910 deaths, nearly 7,000 injuries, and nearly \$1.7 billion in property damage. To help prevent more electrical-related deaths, injuries and property damage, the Electrical Safety Foundation International (ESFI) sponsors and promotes May as



National Electrical Safety Month. "Technology can only do so much to keep us safe," said ESFI Executive Director Michael G. Clendenin. "The key element to electrical safety is awareness. If people are aware of the hazards present around them at home, at work, at school and at play, and of the many simple ways they can keep safe; those statistics can be dramatically reduced."

The foundation is doing its part by educating the public about the importance of respecting electricity and using electrical products safely in the home, school and workplace, and by supporting other organizations as they get the word out in their communities.

Visit the ESFI's web site at www.electrical-safety.org for more information on electrical safety. "After all," said Clendenin, "electrical safety is 24 hours a day, seven days a week."

"The key element to electrical safety is awareness..."

**Michael G. Clendenin,
ESFI Executive Director**

*** WANTED ***

High School Students Wanted!

High School Students looking for a unique & exciting educational experience, all expenses paid. Must be interested in developing their leadership skills, like to meet new friends, and have fun. Want to know what it takes to be a leader and sample life on a college campus.

Apply for the 41st Annual Youth Leadership Congress sponsored by Chippewa Valley Electric Cooperative. Contact your school's guidance counselor or call Cathy at Chippewa Valley Electric Cooperative 715-239-6800 or 1-800-300-6800 for application.

*** WANTED ***

Chippewa Valley Electric Cooperative

P.O. Box 575
Cornell, Wisconsin 54732
(715) 239-6800 or 1-800-300-6800

Your Touchstone Energy® Partner 

SOME PEOPLE ARE SHOCKED BY WHAT THEY FIND IN THEIR YARDS

BE SAFE

Call Diggers Hotline before you start digging.

DIGGERS! HOTLINE

Toll-free: 1-800-242-8511

Milwaukee area:

(414) 259-1181

TDD for Hearing Impaired:

1-800-542-2289

